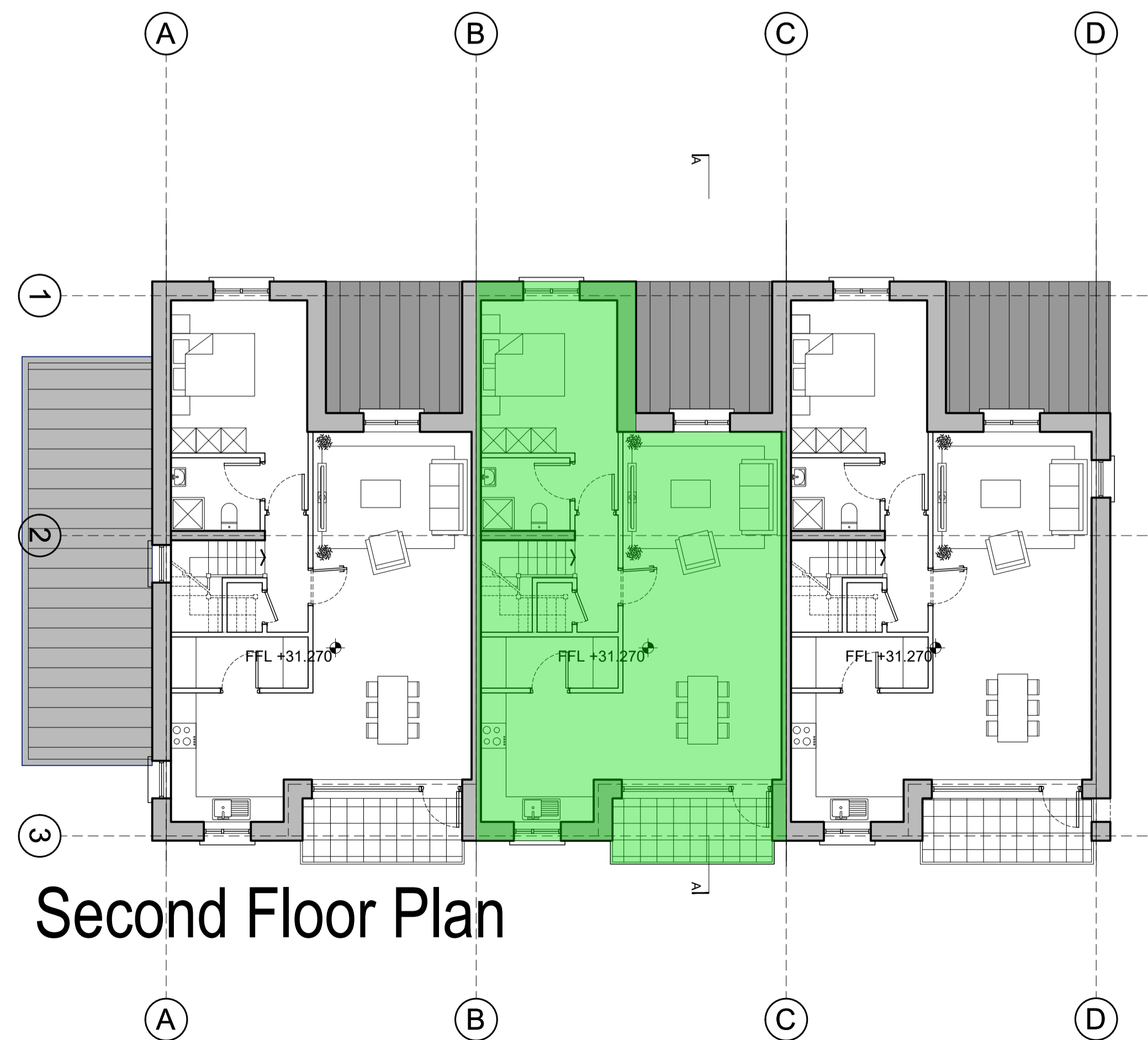
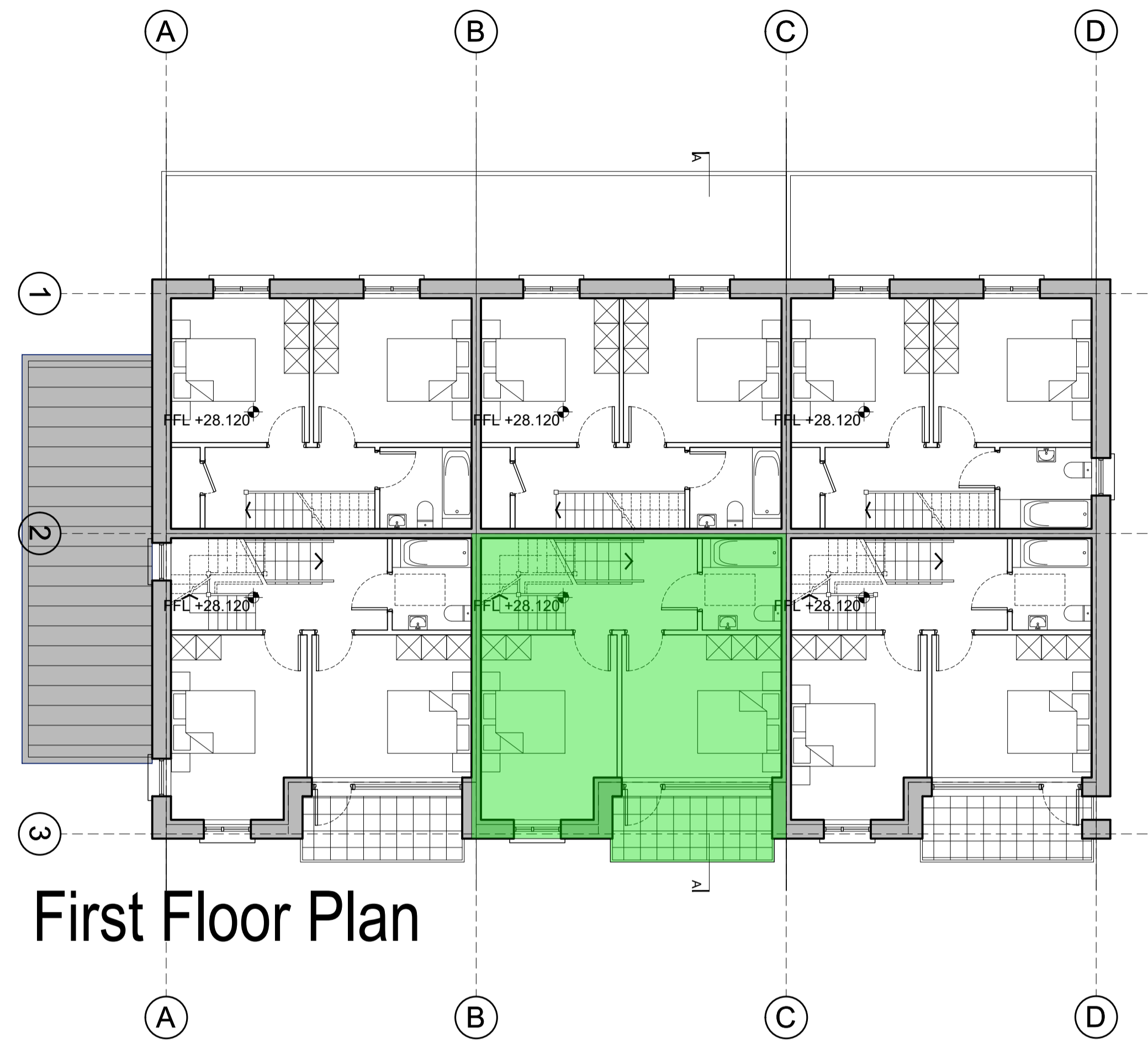


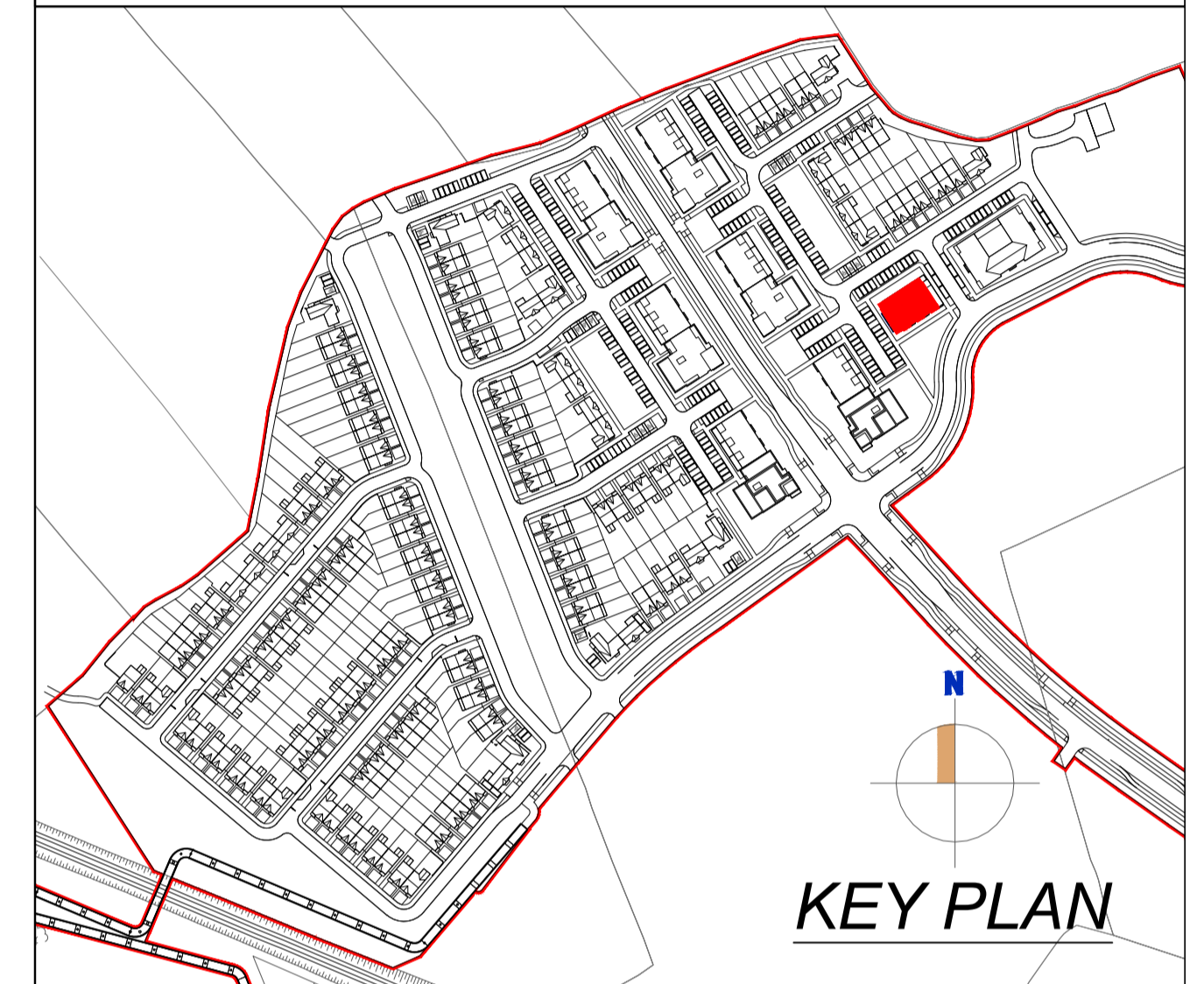
Block 7 - Part V



NOTE:
Do not scale from this drawing, written dimensions only to be used. This drawing is for planning purposes only & not for construction. Levels shown are for information purposes only & may not relate to O.S. Malin Head Datum.
For actual O.S. Malin Head Datum always refer to the Site Layout Plan.
DDA Architects Ltd. retain copyright and ownership of this design which is not transferable.

MATERIALS :

ROOF	SELECTED STANDING SEAM ROOF FINISH/ SEDUM ROOF
WALLS	SELECTED BRICK OR SELF COLOUR RENDERED BLOCK WORK, SELECTED STONE PANEL FINISH SELECTED ZINC COATED ALUMINIUM WALL PANEL.
WINDOWS	SELECTED U-PVC OR TIMBER DOUBLE GLAZED WINDOWS.
FRONT DOOR	SELECTED U-PVC OR TIMBER FINISH DOOR WITH DOUBLE GLAZED VISION PANELS.
RAIN WATER GOODS	U-PVC OR TIMBER FASCIA AND SOFFIT WITH UPVC OR ALUMINIUM POWDER COATED GUTTERS & DOWNPIPES
CANOPY	ALUMINIUM CLAD CANOPY.
COPINGS, WINDOW SURROUNDS & CILLS	CONCRETE CILLS WITH WRAP AROUND D.P.C. AND INSULATION BEHIND.



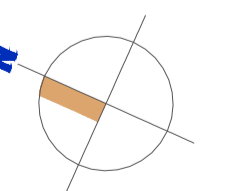
UNITS ALLOCATED FOR PART V

3 BED DUPLEX

REV	DATE	DESCRIPTION	DRAWN
-	-	-	-
-	-	-	-
-	-	-	-
-	-	-	-
-	-	-	-
-	-	-	-
-	-	-	-
-	-	-	-
-	-	-	-
-	-	-	-

DDA DUIGNAN DOOLEY
ARCHITECTS AND PLANNING CONSULTANTS
62 BRIGHTON SQUARE, DUBLIN 6
TEL : 00 353 (1) 490 0499
EMAIL : info@ddaarch.ie
WEB : www.ddaarch.ie

RIA



THIS DRAWING IS COPYRIGHT © FIGURED DIMENSIONS ONLY TO BE USED		STATUS: PLANNING	
CLIENT : SHANNON HOMES DROGHEDA LTD	PROJECT TITLE : COLP WEST SHD DROGHEDA	CD :	PD
DRAWING TITLE : BLOCK 7 - PART V FIRST&SECOND FLOOR PLAN	DRAWING NUMBER : 19-001-P-6.701	REV :	-
DRAWN : MA	CD :	DATE : OCT 2019	SCALE : 1:100@A1; 1:200@A3